



# Connect Series Accessories

**Our energy working for you.™**

[www.cumminspower.com](http://www.cumminspower.com)

©2013 Cummins Power Generation Inc. All rights reserved. Specifications are subject to change without notice. Cummins Power Generation and Cummins are registered trademarks of Cummins Inc. "Our energy working for you." is a trademark of Cummins Power Generation. Other company, product, or service names may be trademarks or service marks of others.  
NAACSB-6026-EN (03/15)

# CONNECT SERIES ACCESSORIES

## Table of Contents

<b>DISPLAYS.....</b>	<b>1</b>
HMI 211 Remote Unit (0541-1394) .....	1
RS In-Home Display (A046K103).....	2
HMI 220 Remote Unit (A041J582) .....	3
<b>ANNUNCIATORS (HMI 113 UNIT).....</b>	<b>4</b>
Annunciator – RS485 Panel Mount (A045J199).....	4
Annunciator – RS485 Panel Mount w/ Enclosure (A045J201).....	4
<b>AUXILIARY .....</b>	<b>5</b>
Auxiliary Output Relays (A044Z053) .....	5
Auxiliary Configurable Signal Inputs / Relay Outputs (A044Z055).....	6
<b>BATTERY CHARGER.....</b>	<b>7</b>
Battery Charger 15A (0300-5878-01).....	7
Battery Charger 6A (A045D925) .....	8
<b>CIRCUIT BREAKERS.....</b>	<b>9</b>
Circuit Breaker Shunt Trip 12vdc (A043X760).....	9
Circuit Breaker Kits .....	9
<b>EXCITER/VOLTAGE REGULATOR KITS.....</b>	<b>15</b>
Permanent Magnet Generator – PMG Kit (A049S000).....	15
Excitation Boost System – EBS Kit (A049F140).....	15
<b>ALTERNATOR HEATER .....</b>	<b>16</b>
Alternator Heater (A044G635) .....	16
Alternator Heater (A044G637) .....	16
<b>EXTREME COLD WEATHER COMPONENTS.....</b>	<b>17</b>
Coolant Heater (A046G479) .....	17
Battery Tray Installation (A045P627) .....	18
Group-34 Cold Start Battery (A045P632).....	18
Battery Heater Kit (A046G494) .....	18
<b>SOUND .....</b>	<b>19</b>
Enclosure Sound Level 2 Upgrade Kit (A043J733) .....	19
Base Barrier – Elevated Genset (A046J607) .....	19
Base Barrier – Elevated Genset (A046J612) .....	19
<b>SAFETY.....</b>	<b>20</b>
Emergency Stop Display Panel (A044Z051) .....	20
<b>MAINTENANCE .....</b>	<b>21</b>
Preventive Maintenance Kit –Heavy Duty (A046N983) .....	21
Preventive Maintenance Kit (A046N985) .....	21
Preventive Maintenance Kit (A046N987) .....	21
Enclosure Touch Up Paint (A043J735) .....	21

## DISPLAYS

### HMI 211 Remote Unit (0541-1394)

#### Description

The Human Machine Interface (HMI) 211 Remote Panel is our robust multi-line display unit, which can be used to monitor and display dynamic generator set performance information as well as perform basic generator set control and configuration. The HMI 211 Remote uses the PCCNet networking protocol to gather and display information and is suitable for usage with PCC1302.

#### Features

Simple installation and operation via PCCNet with PCC1302, which provides the capability to mount the unit up to 4000 feet (1219 meters) from the generator set (with sufficient extra power supply for distances exceeding 500 feet or 152 meters)

- Information concerning AC Volts, Current, Power, PF, Frequency, and Engine Information are all accessible via the intuitive menu system
- HMI211 features a simple tactile design for robustness and ease-of-use
- LEDs include: Not in Auto, Shutdown, Warning, Remote Start, Auto, Manual Run
- Buttons include: Four multi-function buttons, Back and Stop

#### Dimensions

X / Length: 4.38in / 112mm

Y / Width: 5.55in / 142mm

Z / Height (Depth): 1.50in / 35mm

**Kit includes:** Control Display, Control Panel Harness, and Instruction Sheet: 000C-0713



## CONNECT SERIES ACCESSORIES

### RS In-Home Display (A046K103)

**Description** Surface mount HMI that allows remote control functionality for Connect Series generators.

Additional interface and display for Connect Series generators allowing you to monitor and control generator from a remote location. Provides ability to monitor generator functions, review basic diagnostic status, and set user preferences. Surface-mountable design for easy installation.

**Kit Includes:** Control Display, 6 Ft Wiring Harness, Cable Tie, Window Splice and Instruction Sheet: A045H682



# CONNECT SERIES ACCESSORIES

## HMI 220 Remote Unit (A041J582)

### Description

The Human Machine Interface 220 Remote Panel is our robust multi-line display unit, which can be used to monitor and display dynamic generator set performance information, as well as perform basic generator set control and configuration on a medium or large size display respectively. The HMI220 uses the PCCNet networking protocol to gather and display information either from a PCC1302, PCC2300 or a PCC3300 control.

### Features

- Medium size display unit
- LED indicating lamps: Genset running, remote start, not in auto, shutdown, warning, auto, manual and stop
- 128 by 128 pixels graphic LED backlight LCD
- Two tactile feel membrane switches for LCD user defined operation.
- Seven tactile feel membrane switches dedicated screen navigation buttons for up, down, left, right, ok, home and cancel.
- Six tactile feel membrane switches dedicated to control auto, stop, manual, manual start, fault reset and lamp test/panel lamps.
- Two tactile feel membrane switches dedicated to control of circuit breaker (where applicable).
- Allows for complete genset control setup.

### Dimensions

X / Length: 9.10in / 232mm

Y / Width: 11.70in / 298mm

Z / Height (Depth): 1.50in / 38mm

**Kit includes:** Control Display, Connector plugs, Connector sockets and Instruction Sheet: A041J096



## ANNUNCIATORS (HMI 113 UNIT)

### Annunciator – RS485 Panel Mount (A045J199)

### Annunciator – RS485 Panel Mount w/ Enclosure (A045J201)

#### Description

The Universal Annunciator Module provides visual and audible indication of up to 20 separate alarm or status conditions, based on discrete (relay) inputs or network inputs. Each LED can be controlled by either a discrete wire input or by a signal on the PCCnet network sent from an external device, such as a PCC 1301, 1302, 2300, 3300 controls.

In addition to the LEDs, the annunciator can control four custom relays based on signals received over the PCCnet. When one of the annunciator's discrete inputs is activated, the annunciator will broadcast that information over the network. By taking advantage of the network, discrete inputs and custom relays, the annunciator can be used as expanded I/O for a PCC 1301, 1302, 2300, 3300 controls.

This unit can be easily installed in a suitable location in order to provide prompt at-a-glance notification of an alarm or warning condition to nearby personnel.

Remote annunciator panels comply with NFPA 110 (Emergency and Standby Power Systems). The annunciator module can also be used for monitoring of transfer switch or other equipment status.

#### Features

- Visual and audible warnings of up to 20 separate alarm or status conditions.
- LEDs can be controlled either via PCCnet or discrete input.
- Status of discrete inputs are broadcast on network.
- Four custom relays can be controlled over the PCCnet network.
- Configurable LED color (red, yellow, or green) and selectable horn operation allows maximum flexibility.
- Standard NFPA 110 label, field configurable for other alarm status and conditions.
- Each audible alarm is annunciated, regardless of the number of existing alarm conditions displayed.
- Sealed membrane panel design provides environmental protection for internal components and is easy to clean.
- Configurable for negative (ground) input or positive input.
- Integral DC Voltage Sensing.
- Flush or surface mount provisions.
- UL Listed and Labeled; CSA certified; CE Marked.

#### Dimensions

X / Length: 6.25in / 159mm

Y / Width: 5.25in / 133mm

Z / Height (Depth): 3.00in / 76mm

**Kits include:** Annunciator, Wiring Harness, Cable tie and Window splice.



A045J199



A045J201

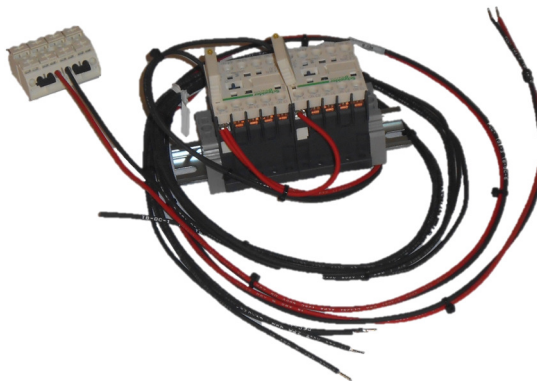
### AUXILIARY

#### Auxiliary Output Relays (A044Z053)

##### Description

2 Relays that allow remote control functionality from PCC1302 control. 600 volt AC; 10 amp; 4 pole (2 poles normally open, 2 poles normally closed)

**Kit includes:** 2 Relays, Harness, screws, Cable Ties and Instruction Sheet A045H692





# CONNECT SERIES ACCESSORIES

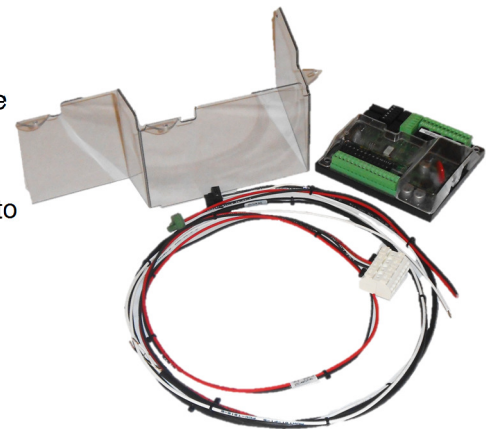
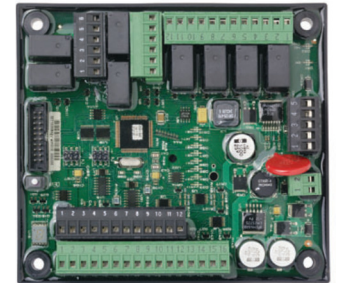
## Auxiliary Configurable Signal Inputs / Relay Outputs (A044Z055)

### Description

The PowerCommand® AUX101 Input/Output module provides up to eight (8) Form-C relay output sets and eight (8) discrete/analog inputs for auxiliary control and monitoring of the power system. The relays may be configured individually from the genset control operator interface or using InPower Software. Module is compatible with genset controls supporting a PCCNet Network and require a twisted pair connection.

### Features

- Up to Eight (8) configurable Form-C relays provide easy control of system equipment such as lamps, louvers, motors, and pumps. LED status of each relay.
- Up to Eight (8) configurable discrete inputs for monitoring equipment status and faults. Equipment status and faults will be annunciated.
- Up to Eight (8) Analog inputs. Analog inputs can be assigned one of seven preprogrammed functions:
  - Oil temperature
  - Exhaust temperature
  - Fuel level
  - Ambient temperature
  - Alternator RTD
  - Speed bias
  - Voltage bias
- Two 5 VDC voltage sources for use with active senders.
- Four programmable current sources for use with resistive senders.
- Two status LED's:
  - DS1(green) indicates the AUX101 is connected to the network and operating normally.
  - DS2(red) indicates the AUX101 has lost its connection or is not connected to the network
- Device Number Indicator. Seven segment LED used to uniquely define more than one AUX101 on the same network
- May be connected at any point in the PCCNet network.
- Plug-and-Play networking – No binding required!
- Pluggable terminal blocks allow easy one-time wiring.
- Less wiring makes installation and system upgrades quick and easy.
- UL Listed and Labeled; CSA certified; CE Compliant.



### Dimensions

X / Length: 5.90in / 150mm

Y / Width: 5.30in / 135mm

Z / Height (Depth): 0.51in / 13mm

**Kit includes:** Input/Output Card, Protection Cover, Circuit Card Harness, Generator Electrical Harness, Electrical Guard, and hardware; Instruction sheet A045H691



### BATTERY CHARGER

#### Battery Charger 15A (0300-5878-01)

##### Description

Cummins Power Generation fully automatic battery chargers - using switched mode power electronics - are constant voltage/constant current chargers incorporating a 4-stage charging algorithm. Designed for use in applications where battery life and reliability are important; these chargers, complete with built-in equalize charge capability, are ideal for stationary or portable starting battery charging service. To achieve optimum battery life, a 4-stage charging cycle is implemented. The four charging stages are trickle, bulk, absorption and float. The trickle stage safely charges overly discharged batteries. It protects a damaged or shorted battery from excessive current. During bulk charge a constant current is applied to quickly restore the maximum battery charge level in the shortest amount of time.

##### Features

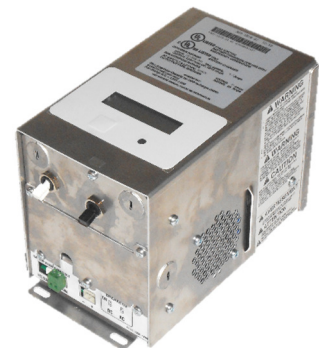
- **Protection:** All models include a 20 amp DC output breaker. Re-settable breakers are used for input voltages 240 VAC and lower. For over 240 VAC branch circuit rated fuses are used.
- **Easy installation:** Clearly marked terminal blocks and panel knockouts provide convenient connections of input and output leads.
- **User display:** Output voltage and current, fault information and configuration options are indicated on the alphanumeric display.
- **Monitoring:** An LED indicates the condition of the charger. Green indicates normal charging operation, amber indicates equalizing and red indicates a fault condition.
- **Adjustable float voltage:** Float voltage can be set through the alpha-numeric display for optimum battery performance and life.
- **Temperature compensation:** An optional external sensor is available for temperature compensated battery charging.
- **Faults:** The charger senses and annunciates the following fault conditions: Input overvoltage, input undervoltage, AC power loss, battery overvoltage, battery undervoltage, charger circuitry over temperature, battery over temperature, unrecoverable battery and overload/overcurrent. Includes 30 volt/2 amp isolated contact for common alarm.
- **Parallel redundant operation:** Chargers can be operated in parallel for redundant reliability or additional charging capacity.
- **Vibration resistant design:** Complies with UL 991 vibration resistance requirements.
- **UL 1236 (BBHH) Listing:** For use with lead acid batteries in generator set installations. Also suitable for use with NiCad, gel and AGM batteries.
- **Input Volts:** 120/208/240.

##### Dimensions

- X / Length: 9.75in / 248mm
- Y/ Width: 5.56in / 141mm
- Z / Height (Depth): 6.14in / 156mm

**Mount inside building** for Connect Series gensets

**Kit includes:** Battery Charger, Operators Manual and Instruction Sheet A003X677



# CONNECT SERIES ACCESSORIES

## Battery Charger 6A (A045D925)

### Description

Cummins Power Generation fully automatic battery chargers use a 3-stage charging cycle to maximize battery life. During the bulk stage, the charger uses its full amp output to do the heaviest charging, quickly bringing your battery to about 75% of capacity. In the absorption stage, the current slows, adjusting for maximum charging efficiency while it gently tops off the battery to about 98% of capacity. During the maintenance stage, a lower, closely-regulated, constant voltage is applied to maintain full charge and prevent discharge.

Unlike some “trickle chargers,” the float charger won’t apply more current than necessary to maintain full charge. Batteries can be connected indefinitely, without harm; in fact, the float charge extends battery life.

### Features

- **Lightweight and silent** – Lighter than transformer types, completely silent but still provides full output when overloaded outlets drop AC voltage below the normal 115V
- **Monitoring** – Status LED indicators are provided to show the condition or charging status of the battery. When the red LED is on, it indicates that the battery is discharged and is recharging at the ‘BULK’ rate. When both the red and green LEDs are on, the battery is charging at the ‘midrange’ rate. When the green LED is on, the battery is 90% charged and ready for use.
- **Construction** – Made using epoxy-potted cases making it the ultimate in durability, completely waterproof and able to withstand numerous caustic chemicals and gases, as well as being shockproof
- **Fault Indication** – The charger senses and indicates the following fault conditions: Defective or damaged cells, undervoltage at the battery, battery drawing more current than charger can replace, loss of power or extremely low AC voltage at the charger, other battery fault conditions and charger failure.
- **Compatibility** – Works with Sealed Lead Acid (SLA), Absorbed Glass Mat (AGM) and Gel type batteries.
- **Low Electromagnetic and Radio Frequency Interference** – This product meets FCC class B for conducted and radiated emissions.
- **Listed** – This product is UL listed according to the UL 1236 Standard.
- **Warranty** – This product has a two year warranty
- **Input Volts:** 115/208/240.

### Dimensions

- X / Height: 2.25in / 57mm
- Y/ Width: 6.4in / 162mm
- Z / Depth: 3.5in / 89mm

**Kit includes:** Battery Charger, Cable Ties, Screws, Terminal Block Connectors, and Instruction Sheet A045H707



### CIRCUIT BREAKERS

#### Circuit Breaker Shunt Trip 12vdc (A043X760)

##### Description

Allows the ability to remotely trip the circuit breaker when the shunt trip is energized.



#### Circuit Breaker Kits

Ability to change the amperage on your current Circuit Breaker, or to add a dual breaker is key to providing protection against over-current and short-current conditions. Our breaker line provides a wide range of flexibility to meet your needs.

#### Instructions to Locate Appropriate Circuit Breaker Accessories Kit

1. Locate your Alternator Number and Phase from the “Connect Series Preconfigured Model Reference Table”.
2. Go to the Single Phase or Three Phase Circuit Breaker Selection Table and do the following:
  - Locate your desired Circuit Breaker Amperage
  - Read across for your Alternator Model
  - Continue to read across and find your needed accessory part numbers:
    - **Single Circuit Breaker:** Order Accessory 1 (Breaker)
    - **Dual Circuit Breaker:** Order Accessories 1, 2, and 3 (Breaker, Hardware, and Lead kit).

# CONNECT SERIES ACCESSORIES

Connect Series Preconfigured Model Reference Table

Product Name	Marketing Name	Preconfigured Name	Updated Preconfigured	kW	Engine RPM	Voltage	Phase	Alternator	Circuit Breaker	Compatible Exciter/Regulator
RS22	C22 N6	A048H946	A051X280	22	1800 rpm	120/240	1 phase	CA115	100 Amp	EBS
RS22	C22 N6	A048K385	A051Y397	22	1800 rpm	120/208	3 phase	CA115	90 Amp	EBS
RS22	C22 N6	A048P347	A051Y398	22	1800 rpm	120/240	3 phase	CA115	80 Amp	EBS
RS25	C25 N6	A048H950	A051Y239	25	1800 rpm	120/240	1 phase	CA115	125 Amp	EBS
RS25	C25 N6	A048K393	A051Y399	25	1800 rpm	120/208	3 phase	CA115	100 Amp	EBS
RS25	C25 N6	A048P545		25	1800 rpm	120/240	1 phase	CA115	100 Amp	EBS
RS25	C25 N6	A048P348	A051Y400	25	1800 rpm	120/240	3 phase	CA115	90 Amp	EBS
RS30	C30 N6	A046F136		30	1800 rpm	120/240	1 phase	CA115	175 Amp	EBS
RS30	C30 N6	A048H945	A051Y401	30	1800 rpm	120/240	1 phase	CA115	150 Amp	EBS
RS30	C30 N6	A046F223		30	1800 rpm	120/208	3 phase	CA115	150 Amp	EBS
RS30	C30 N6	A048K397	A051Y402	30	1800 rpm	120/208	3 phase	CA115	125 Amp	EBS
RS30	C30 N6	A048P349	A051Y405	30	1800 rpm	120/240	3 phase	CA115	100 Amp	EBS
RS36	C36 N6	A048H951	A051Y417	36	1800 rpm	120/240	1 phase	CA115	175 Amp	EBS
RS36	C36 N6	A048K398	A051Y418	36	1800 rpm	120/208	3 phase	CA115	150 Amp	EBS
RS36	C36 N6	A048P353	A051Y413	36	1800 rpm	120/240	3 phase	CA115	125 Amp	EBS
RS36	C36 N6	A048P419	A051Y416	36	1800 rpm	277/480	3 phase	CA115	60 Amp	EBS
RS40	C40 N6	A046F576		40	1800 rpm	120/240	1 phase	CA125	225 Amp	PMG
RS40	C40 N6	A048H955	A051Y419	40	1800 rpm	120/240	1 phase	CA125	200 Amp	PMG
RS40	C40 N6	A046F396		40	1800 rpm	120/208	3 phase	CA115	200 Amp	EBS
RS40	C40 N6	A048K399	A051Y420	40	1800 rpm	120/208	3 phase	CA115	175 Amp	EBS
RS40	C40 N6	A048P354	A051Y421	40	1800 rpm	120/240	3 phase	CA115	150 Amp	EBS
RS40	C40 N6	A048P420	A051Y424	40	1800 rpm	277/480	3 phase	CA115	80 Amp	EBS
RX30	C30 N6H	A046F319		30	3600 rpm	120/240	1 phase	CA115	175 Amp	
RX30	C30 N6H	A048H970	A051Y426	30	3600 rpm	120/240	1 phase	CA115	150 Amp	
RX30	C30 N6H	A046F205		30	3600 rpm	120/208	3 phase	CA115	150 Amp	
RX30	C30 N6H	A048K400	A051Y428	30	3600 rpm	120/208	3 phase	CA115	125 Amp	
RX30	C30 N6H	A048P386	A051Y429	30	3600 rpm	120/240	3 phase	CA115	100 Amp	
RX36	C36 N6H	A048H988	A051Y444	36	3600 rpm	120/240	1 phase	CA115	175 Amp	
RX36	C36 N6H	A048K401	A051Y448	36	3600 rpm	120/208	3 phase	CA115	150 Amp	
RX36	C36 N6H	A048P387	A051Y453	36	3600 rpm	120/240	3 phase	CA115	125 Amp	
RX36	C36 N6H	A048P421	A051Y458	36	3600 rpm	277/480	3 phase	CA115	60 Amp	
RX40	C40 N6H	A048H989	A051Y459	40	3600 rpm	120/240	1 phase	CA115	200 Amp	
RX40	C40 N6H	A048K438	A051Y463	40	3600 rpm	120/208	3 phase	CA115	175 Amp	
RX40	C40 N6H	A048P388	A051Y465	40	3600 rpm	120/240	3 phase	CA115	150 Amp	
RX40	C40 N6H	A048P422	A051Y467	40	3600 rpm	277/480	3 phase	CA115	80 Amp	
RX45	C45 N6H	A048H990	A051Y468	45	3600 rpm	120/240	1 phase	CA135	200 Amp	
RX45	C45 N6H	A048K440	A051Y469	45	3600 rpm	120/208	3 phase	CA115	200 Amp	
RX45	C45 N6H	A048P391	A051Y472	45	3600 rpm	120/240	3 phase	CA115	150 Amp	
RX45	C45 N6H	A048P423	A051Y473	45	3600 rpm	277/480	3 phase	CA115	80 Amp	
RX50	C50 N6H	A048H991	A051Y474	50	3600 rpm	120/240	1 phase	CA135	200 Amp	
RX50	C50 N6H	A048K441	A051Y476	50	3600 rpm	120/208	3 phase	CA115	200 Amp	
RX50	C50 N6H	A048P405	A051Y477	50	3600 rpm	120/240	3 phase	CA115	175 Amp	
RX50	C50 N6H	A048P424	A051Y478	50	3600 rpm	277/480	3 phase	CA115	90 Amp	
RX60	C60 N6H	A046F110		60	3600 rpm	120/240	1 phase	CA135	250 Amp	
RX60	C60 N6H	A048J005	A051Y479	60	3600 rpm	120/240	1 phase	CA135	250 Amp	
RX60	C60 N6H	A046D249		60	3600 rpm	120/208	3 phase	CA135	250 Amp	
RX60	C60 N6H	A048K442	A051Y480	60	3600 rpm	120/208	3 phase	CA135	250 Amp	
RX60	C60 N6H	A048P406	A051Y482	60	3600 rpm	120/240	3 phase	CA135	200 Amp	
RX60	C60 N6H	A048P425	A051Y483	60	3600 rpm	277/480	3 phase	CA135	100 Amp	

## CONNECT SERIES ACCESSORIES

																			ACCESSORIES		
CIRCUIT BREAKER							CIRCUIT BREAKER SELECTION												1	2	3
Alt Phase	Feature Code "A" POSITION	Feature Code "B" POSITION	CIRCUIT BREAKER Amperage	CIRCUIT BREAKER model	CIRCUIT BREAKER Mfg Part #	Alternator Model	C20N6	C22N6	C25N6	C30N6	C36N6	C40N6	C30N6H	C36N6H	C40N6H	C45N6H	C50N6H	C60N6H	CIRCUIT BREAKER	CIRCUIT BREAKER Hardware Kit	"B" position LEADS Kit
SINGLE PHASE	KV05-2	KV55-2	15	2 Pole H-Frame, Thermal Magnetic 80%	HDL26015	CA115	15	15	15	15	15	15	15	15	15	15	15		A044Z201	A045P241	A045A626
						CA125					15	15									A045B104
						CA135								15	15	15	15	A045B104			
	KV06-2	KV56-2	20	2 Pole H-Frame, Thermal Magnetic, 80%	HDL26020	CA115	20	20	20	20	20	20	20	20	20	20		A044Z200	A045P241	A045A626	
						CA125					20	20									A045B104
						CA135								20	20	20	20			A045B104	
	KV07-2	KV57-2	25	2 Pole H-Frame, Thermal Magnetic, 80%	HDL26025	CA115	25	25	25	25	25	25	25	25	25	25		A044Z203	A045P241	A045A626	
						CA125					25	25									A045B104
						CA135									25	25	25			25	A045B104
	KV08-2	KV58-2	30	2 Pole H-Frame, Thermal Magnetic, 80%	HDL26030	CA115	30	30	30	30	30	30	30	30	30	30		A044Z199	A045P241	A045A626	
						CA125					30	30									A045B104
						CA135									30	30	30			30	A045B104
	KV09-2	KV59-2	40	2 Pole H-Frame, Thermal Magnetic, 80%	HDL26040	CA115	40	40	40	40	40	40	40	40	40	40		A044Z198	A045P241	A045A626	
						CA125					40	40									A045B104
						CA135									40	40	40			40	A045B104
	KV10-2	KV60-2	50	2 Pole H-Frame, Thermal Magnetic, 80%	HDL26050	CA115	50	50	50	50	50	50	50	50	50	50		A044Z197	A045P241	A045A626	
						CA125					50	50									A045B104
						CA135									50	50	50			50	A045B104
	KV11-2	KV61-2	60	2 Pole H-Frame, Thermal Magnetic, 80%	HDL26060	CA115	60	60	60	60	60	60	60	60	60	60		A044Z196	A045P241	A045A626	
						CA125					60	60									A045B104
						CA135									60	60	60			60	A045B104
	KV12-2	KV62-2	70	2 Pole H-Frame, Thermal Magnetic, 80%	HDL26070	CA115	70	70	70	70	70	70	70	70	70	70		A044Z195	A045P241	A045A626	
						CA125					70	70									A045B104
						CA135									70	70	70			70	A045B104
	KV13-2	KV63-2	80	2 Pole H-Frame, Thermal Magnetic, 80%	HDL26080	CA115	80	80	80	80	80	80	80	80	80	80		A044Z194	A045P241	A045A626	
						CA125					80	80									A045B104
						CA135									80	80	80			80	A045B104
	KV14-2	KV64-2	90	2 Pole H-Frame, Thermal Magnetic, 80%	HDL26090	CA115	90	90	90	90	90	90	90	90	90	90		A044Z193	A045P241	A045A626	
						CA125					90	90									A045B104
						CA135									90	90	90			90	A045B104

# CONNECT SERIES ACCESSORIES

## SINGLE PHASE continued

																		ACCESSORIES			
CIRCUIT BREAKER							CIRCUIT BREAKER SELECTION											1	2	3	
Alt Phase	Feature Code "A" POSITION	Feature Code "B" POSITION	CIRCUIT BREAKER Amperage	CIRCUIT BREAKER model	CIRCUIT BREAKER Mfg Part #	Alternator Model	C20N6	C22N6	C25N6	C30N6	C36N6	C40N6	C30N6H	C36N6H	C40N6H	C45N6H	C50N6H	C60N6H	CIRCUIT BREAKER	CIRCUIT BREAKER Hardware Kit	"B" position LEADS Kit
SINGLE PHASE	KV15-2	KV65-2	100	2 Pole H-Frame, Thermal Magnetic, 80%	HDL26100	CA115	100	100	100	100	100	100	100	100	100	100	100		A044Z192	A045P241	A045A626
						CA125					100	100									A045B104
						CA135									100	100	100	100			A045B104
	KV16-2	KV66-2	125	2 Pole H-Frame, Thermal Magnetic, 80%	HDL26125	CA115	125	125	125	125	125	125	125	125	125	125	125		A044Z191	A045P241	A045A626
						CA125					125	125									A045B104
						CA135									125	125	125	125			A045B104
	KV16-2	KV67-2	150	2 Pole H-Frame, Thermal Magnetic, 80%	HDL26150	CA115			150	150	150	150	150	150	150	150	150		A044Z190	A045P241	A045A626
						CA125				150	150										A045B104
						CA135									150	150	150	150			A045B104
	KV18-2	KV68-2	175	2 Pole J-Frame, Thermal Magnetic, 80%	JDL26175	CA115				175	175	175	175	175	175	175	175		A044Z184	A045P245	A045A626
						CA125					175	175									A045B104
						CA135									175	175	175	175			A045B104
	KV19-2	KV69-2	200	2 Pole J-Frame, Thermal Magnetic, 80%	JDL26200	CA115					200	200		200	200	200	200		A044Z183	A045P245	A045A626
						CA125					200	200									A045B104
						CA135									200	200	200	200			A045B104
	KV20-2	KV70-2	225	2 Pole J-Frame, Thermal Magnetic, 80%	JDL26225	CA115						225			225	225	225		A044Z182	A045P245	A045A626
						CA125						225									A045B108
						CA135									225	225	225	225			A045B108
	KV21-2	KV71-2	250	2 Pole J-Frame, Thermal Magnetic, 80%	JDL26250	CA115										250	250		A044Z045	A045P245	A045A626
						CA125															A045B108
						CA135										250	250	250			A045B108
	KV47-2	Not Offered	250	3 pole J-Frame, Electronic, (LI trip unit) 100%	JDL36250U31X	CA135											250	250	A044Z217	A045P249	
	Not Offered	KX27-2	250	3 pole J-Frame, Electronic, (LSI trip unit) 80%	JDL3625CU33X	CA135												250	A050P694	A045P249	A045B106
	KX26-2	Not Offered	250	3 pole J-Frame, Electronic, (LSI trip unit) 100%	JDL3625CU33X	CA135												250	A050P695	A045P249	

## CONNECT SERIES ACCESSORIES

																			ACCESSORIES		
		CIRCUIT BREAKER					CIRCUIT BREAKER SELECTION												1	2	3
Alt Phase	Feature Code "A" POSITION	Feature Code "B" POSITION	CIRCUIT BREAKER Amperage	CIRCUIT BREAKER model	CIRCUIT BREAKER Mfg Part #	Alternator Model	C20N6	C22N6	C25N6	C30N6	C36N6	C40N6	C30N6H	C36N6H	C40N6H	C45N6H	C50N6H	C60N6H	CIRCUIT BREAKER	CIRCUIT BREAKER Hardware Kit	"B" position LEADS Kit
THREE PHASE	KV30-2	KV80-2	15	3 pole H-Frame, Thermal Magnetic, 80%	HDL36015	CA115	15	15	15	15	15	15	15	15	15	15	15		A044Z215	A045P245	A045B102
						CA125					15	15									A045B106
						CA135								15	15	15	15	A045B106			
	KV31-2	KV81-2	20	3 pole H-Frame, Thermal Magnetic, 80%	HDL36020	CA115	20	20	20	20	20	20	20	20	20	20		A044Z214	A045P245	A045B102	
						CA125					20	20									A045B106
						CA135								20	20	20	20			A045B106	
	KV32-2	KV82-2	25	3 pole H-Frame, Thermal Magnetic, 80%	HDL36025	CA115	25	25	25	25	25	25	25	25	25	25		A044Z216	A045P245	A045B102	
						CA125					25	25									A045B106
						CA135								25	25	25	25			A045B106	
	KV33-2	KV83-2	30	3 pole H-Frame, Thermal Magnetic, 80%	HDL36030	CA115	30	30	30	30	30	30	30	30	30	30		A044Z213	A045P245	A045B102	
						CA125					30	30									A045B106
						CA135								30	30	30	30			A045B106	
	KV34-2	KV84-2	40	3 pole H-Frame, Thermal Magnetic, 80%	HDL36040	CA115	40	40	40	40	40	40	40	40	40	40		A044Z212	A045P245	A045B102	
						CA125					40	40									A045B106
						CA135								40	40	40	40			A045B106	
	KV35-2	KV85-2	50	3 pole H-Frame, Thermal Magnetic, 80%	HDL36050	CA115	50	50	50	50	50	50	50	50	50	50		A044Z211	A045P245	A045B102	
						CA125					50	50									A045B106
						CA135								50	50	50	50			A045B106	
	KV36-2	KV86-2	60	3 pole H-Frame, Thermal Magnetic, 80%	HDL36060	CA115	60	60	60	60	60	60	60	60	60	60		A044Z210	A045P245	A045B102	
						CA125					60	60									A045B106
						CA135								60	60	60	60			A045B106	
	KV37-2	KV87-2	70	3 pole H-Frame, Thermal Magnetic, 80%	HDL36070	CA115	70	70	70	70	70	70	70	70	70	70		A044Z209	A045P245	A045B102	
						CA125					70	70									A045B106
						CA135								70	70	70	70			A045B106	
	KV38-2	KV88-2	80	3 pole H-Frame, Thermal Magnetic, 80%	HDL36080	CA115	80	80	80	80	80	80	80	80	80	80		A044Z207	A045P245	A045B102	
						CA125					80	80									A045B106
						CA135								80	80	80	80			A045B106	
	KV39-2	KV89-2	90	3 pole H-Frame, Thermal Magnetic, 80%	HDL36090	CA115	90	90	90	90	90	90	90	90	90	90		A044Z206	A045P245	A045B102	
						CA125					90	90									A045B106
						CA135								90	90	90	90			A045B106	



## CONNECT SERIES ACCESSORIES

### THREE PHASE continued

																	ACCESSORIES				
		CIRCUIT BREAKER					CIRCUIT BREAKER SELECTION										1	2	3		
Alt Phase	Feature Code "A" POSITION	Feature Code "B" POSITION	CIRCUIT BREAKER Amperage	CIRCUIT BREAKER model	CIRCUIT BREAKER Mfg Part #	Alternator Model	C20N6	C22N6	C25N6	C30N6	C36N6	C40N6	C30N6H	C36N6H	C40N6H	C45N6H	C50N6H	C60N6H	CIRCUIT BREAKER	CIRCUIT BREAKER Hardware Kit	"B" position LEADS Kit
THREE PHASE	KV40-2	KV90-2	100	3 pole H-Frame, Thermal Magnetic, 80%	HDL36100	CA115		100	100	100	100	100	100	100	100	100	100		A044Z208	A045P245	A045B102
						CA125				100	100										A045B106
						CA135								100	100	100	100				A045B106
	KV41-2	KV91-2	125	3 pole H-Frame, Thermal Magnetic, 80%	HDL36125	CA115		125	125	125	125	125	125	125	125	125		A044Z205	A045P245	A045B102	
						CA125				125	125										A045B106
						CA135								125	125	125	125				A045B106
	KV42-2	KV92-2	150	3 pole H-Frame, Thermal Magnetic, 80%	HDL36150	CA115			150	150	150	150	150	150	150		A044Z204	A045P245	A045B102		
						CA125				150	150										A045B106
						CA135								150	150	150			150		A045B106
	KV43-2	KV93-2	175	3 pole J-Frame, Thermal Magnetic, 80%	JDL36175	CA115				175	175		175	175	175	175		A044Z189	A045P245	A045B102	
						CA125				175	175										A045B106
						CA135								175	175	175	175				A045B106
	KV44-2	KV94-2	200	3 pole J-Frame, Thermal Magnetic, 80%	JDL36200	CA115					200			200	200	200		A044Z187	A045P245	A045B102	
						CA125					200										A045B106
						CA135								200	200	200	200				A045B106
	KV45-2	KV95-2	225	3 pole J-Frame, Thermal Magnetic, 80%	JDL36225	CA115										225	225		A048N320	A045P245	A045B102
																					A045B106
						CA135										225	225	225			A045B106
	KV46-2	KV96-2	250	3 pole J-Frame, Thermal Magnetic, 80%	JDL36250	CA115													A044Z185	A045P245	A045B102
						CA125															A045B106
						CA135											250				A045B106
	KV47-2	Not Offered	250	3 pole J-Frame, Electronic, (LI trip unit) 100%	JDL36250U31X	CA135												250	A044Z217	A045P249	
	Not Offered	KX27-2	250	3 pole J-Frame, Electronic, (LSI trip unit) 80%	JDL3625CU33X	CA135												250	A050P694	A045P249	A045B106
	KX26-2	Not Offered	250	3 pole J-Frame, Electronic, (LSI trip unit) 100%	JDL3625CU33X	CA135												250	A050P695	A045P249	

### EXCITER/VOLTAGE REGULATOR KITS

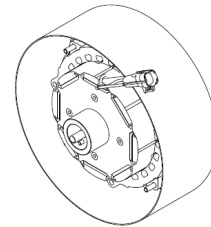
#### Permanent Magnet Generator – PMG Kit (A049S000)

##### Description

The PMG is a separate permanent magnet generator installed on the end of the main generator's shaft, providing an isolated power source for the voltage regulator, so that the excitation circuit is not affected by the load on the generator. PMG is recommended for enhanced motor starting capability and performance with non-linear load conditions. .

**Compatible with:** Gensets using CA125 or CA135 alternators for feature code B184-2. See "Connect Series Preconfigured Model Reference Table" in the Circuit Breaker section for preconfigured model listing compatibility.

**Kit Includes:** Permanent Magnet Generator kit, Receptacle housing, Cable ties and Instruction Sheet: A049R990



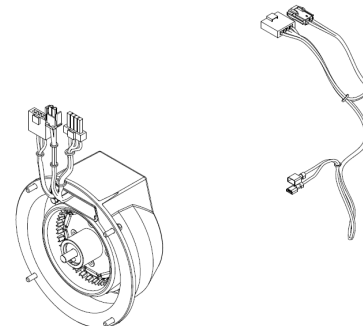
#### Excitation Boost System – EBS Kit (A049F140)

##### Description

A single self-contained unit installed to the non-drive end of the generator to feed additional power to the generator excitation system whenever the generator is subjected to a large impact load, such as motor starting. The added power supports the load power until the breaker discrimination can enable the generator to pick up a motor and drive the voltage recovery.

**Compatible with:** Gensets using the CA115 alternator for Feature code B979-2. See "Connect Series Preconfigured Model Reference Table" in the Circuit Breaker section for preconfigured model listing compatibility.

**Kit Includes:** Excitation Boost kit, Alternating current harness, Cable ties and Instruction Sheet: A049R987



### ALTERNATOR HEATER

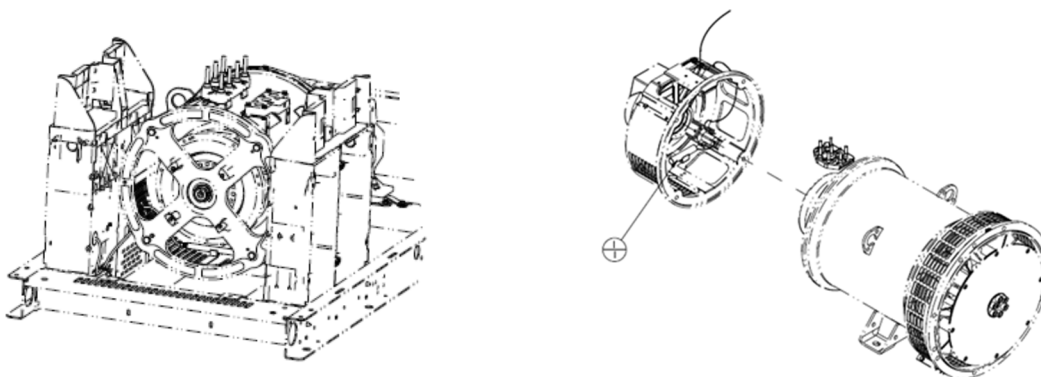
#### Alternator Heater (A044G635)

##### Description

Prevents condensation and frost from forming on the alternator. Designed to prevent corrosive damage of electrical and mechanical components in high humidity environments.

**Compatible with:** Gensets using the CA125 or CA135 alternators (C36N6, C40N6, C40N6H, C45N6H, C50N6H, C60N6H).

**Kit Includes:** Alternator heater, marking label, cable ties, hex nuts, lock washers and thread sealant and Instruction Sheet: A046M783



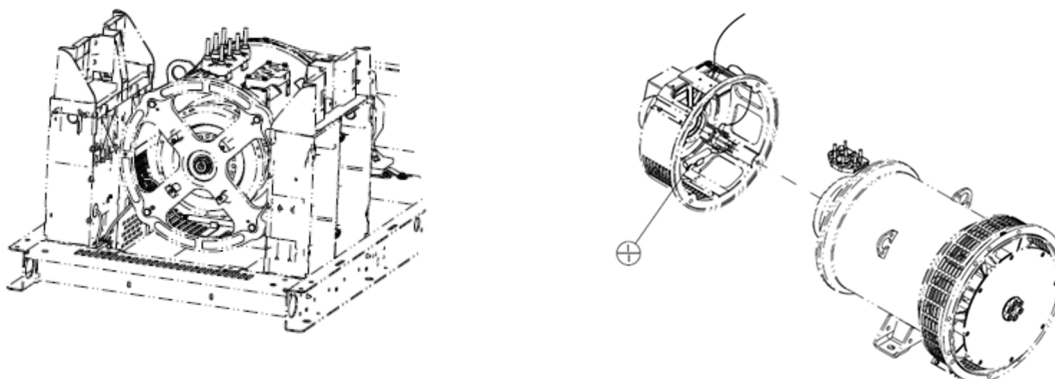
#### Alternator Heater (A044G637)

##### Description

Prevents condensation and frost from forming on the alternator. Designed to prevent corrosive damage of electrical and mechanical components in high humidity environments.

**Compatible with:** Gensets using the CA115 alternator (C22N6, C25N6, C30N6, C36N6, C40N6, C30N6H, C36N6H, C40N6H, C45N6H, C50N6H).

**Kit Includes:** Alternator heater, marking label, cable ties, hex nuts, lock washers and thread sealant and Instruction Sheet: A046M783



### EXTREME COLD WEATHER COMPONENTS

For cold climates, plan ahead to ensure the performance of your generator. The components shown in the chart below will work together to keep your generator running, even when the temperatures dip below 0 °F.

Accessory Kit	Description
<b>A046G479</b>	Coolant Heater (Single Phase 120 V)
<b>A045P627</b>	Battery Tray Installation
<b>A045P632</b>	Group-34 Cold Start Battery
<b>A046G494</b>	Battery Heater Kit

#### Coolant Heater (A046G479)

##### Description

Single Phase, 120 V, 500 watt Coolant Heater is UL Listed and CSA Compliant. Thermostatically controlled turns on 60°F. Suggested for consistent starting at temperatures below 32 °F.

**Kit Includes:** Coolant heater, adaptor, clamp, hoses, fitting, installation hardware and Instruction sheet A046M791.



## CONNECT SERIES ACCESSORIES

### Battery Tray Installation (A045P627)

#### Description

Larger tray which allows the installation of larger Group 34 battery into Connect Series generator, in place of the standard battery.

**Kit Includes:** Battery Tray, Battery Strap, screws, grommet, and tie cable.



### Group-34 Cold Start Battery (A045P632)

#### Description

Group 34, wet cell 12V battery performs to 0°F, with 850 Cold Cranking Amps.

#### Dimensions (approximate)

X / Length: 10.25in

Y / Width: 6.63in

Z / Height (Depth): 8.75in



### Battery Heater Kit (A046G494)

#### Description

125 Watts/120 Volt thermostatically controlled (41°F closed, 70°F open) flexible heater sits beneath the generator set battery and warms it for improved cold weather starting performance.

**Instruction sheet:** A046M778



## CONNECT SERIES ACCESSORIES

### SOUND

#### Enclosure Sound Level 2 Upgrade Kit (A043J733)

##### Description

Fits all Connect Series generators. Provides enhanced sound attenuation beyond stock enclosure. The insulated polymer inlet duct is matching Sandstone in color.

**Instruction Sheet:** A046J596



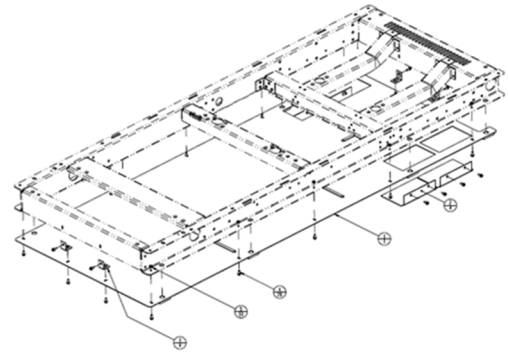
#### Base Barrier – Elevated Genset (A046J607)

##### Description

Used on roof installed Connect Series to provide a sheet metal barrier between generator and roof.

**Compatible with:** Platform 2 generators (C30N6, C36N6, C40N6, C36N6H, C40N6H, C45N6H, C50N6H, C60N6H)

**Kit includes:** Skid pan, Cover plates, Support members, screws and nuts needed for installation. **Instruction Sheet:** A046L270



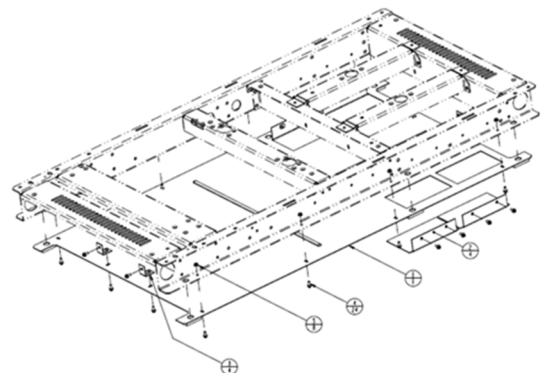
#### Base Barrier – Elevated Genset (A046J612)

##### Description

Used on roof installed Connect Series to provide a sheet metal barrier between generator and roof.

**Compatible with:** Platform 1 generators (C22N6, C25N6, C30N6H)

**Kit includes:** Skid pan, Cover plates, Support members, screws and nuts needed for installation. **Instruction Sheet:** A046L270



### SAFETY

Externally mounted emergency stop button allows for additional operator safety.

#### Emergency Stop Display Panel (A044Z051)

##### Description

Pressing the yellow Emergency Stop control switch will cause the generator set to immediately shut down. The generator set is prevented from running or cranking with the switch pressed in.

**Kit includes:** Generator Electrical Harness, Switch Bezel, and Electrical Guard.  
Instruction Sheet A045H700





### MAINTENANCE

Completing a scheduled maintenance program for your generator will ensure that it remains in good operating conditions, and that you meet warranty requirements. Recommended maintenance intervals are shown in the generator Operator Manual, for your reference.

#### Preventive Maintenance Kit –Heavy Duty (A046N983)

**Used on:** Connect Series C30N6, C36N6, C40N6 generators located in harsh or dusty environments.

**Kit includes:** 1 Oil Filter and 1 Heavy Duty Air Filter



#### Preventive Maintenance Kit (A046N985)

**Used on:** Connect Series Platform 1 generators (C22N6, C25N6, C30N6, C30N6H) when a Normal Duty Air Filter is needed.

**Kit includes:** 1 Oil Filter and 1 Normal Duty Air Filter



#### Preventive Maintenance Kit (A046N987)

**Used on:** Connect Series Platform 2 generators (C36N6, C40N6, C36N6H, C40N6H, C45N6H, C50N6H, C60N6H) when a Normal Duty Air Filter is needed

**Kit includes:** 1 Oil Filter and 1 Normal Duty Air Filter



#### Enclosure Touch Up Paint (A043J735)

Sandstone 0.5 Fl Oz brush-in-cap bottle helps to cover minor scratches & keep your generator looking good throughout its lifetime.

# CONNECT SERIES ACCESSORIES

## **Americas**

1400 73rd Avenue N.E.  
Minneapolis, MN 55432 USA  
Phone: 763 574 5000  
Fax: 763 574 5298

## **Europe, CIS, Middle East and Africa**

Manston Park Columbus Ave.  
Manston Ramsgate  
Kent CT 12 5BF United Kingdom  
Phone 44 1843 255000  
Fax 44 1843 255902

## **Asia Pacific**

10 Toh Guan Road #07-01  
TT International Tradepark  
Singapore 608838  
Phone 65 6417 2388  
Fax 65 6417 2399

**Our energy working for you.™**

[www.cumminspower.com](http://www.cumminspower.com)

©2013 Cummins Power Generation Inc. All rights reserved. Specifications are subject to change without notice. Cummins Power Generation and Cummins are registered trademarks of Cummins Inc. "Our energy working for you." is a trademark of Cummins Power Generation. Other company, product, or service names may be trademarks or service marks of others.

NAACSB-6026-EN (03/15)

