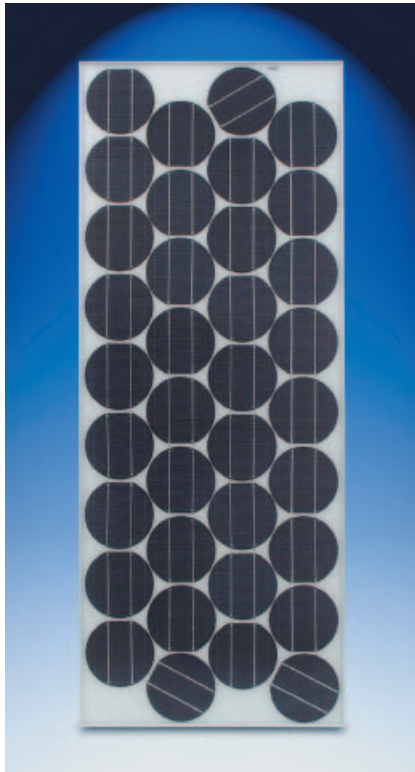


SunWize® SW Series Solar Modules

TECHNOLOGIES

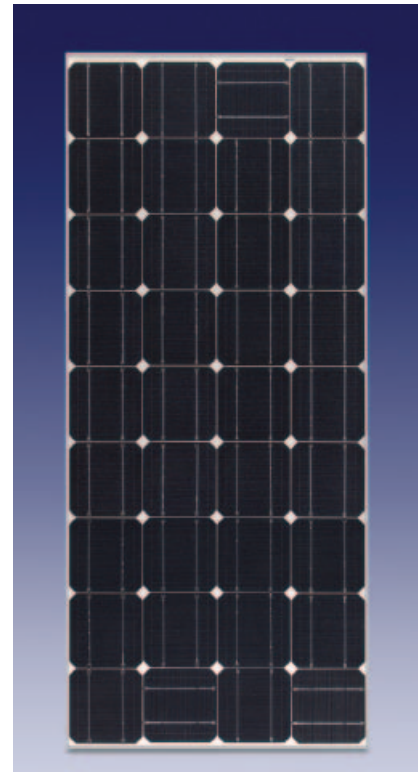


SW85 and the SW90

SunWize® Solar Modules deliver top-quality performance for all photovoltaic applications including rural electrification, water pumping, telemetry, communications, and general battery charging. SunWize modules can be used in single-module and multiple-module installations and are ideal for high voltage grid-tied inverters. Each module consists of 36 solar cells connected in series providing maximum charging power.

FEATURES:

- Single crystalline solar cells are encapsulated and bonded to the glass in multiple layers of ethylene vinyl acetate (EVA) and laminated with a white Tedlar™ backing insuring long life in severe environmental conditions.
 - The glass surface allows maximum light transmission and is impact resistant to hailstone forces up to 5 ft-lbs.
 - A weather resistant junction box accommodates all wiring methods including moisture-tight strain relief connectors and electrical conduit.
 - Pre-drilled mounting holes.
 - Dual bypass diodes contained within the junction box insure reliable operation.
- Anodized aluminum tubular frames add strength and durability to the modules and are constructed to withstand constant wind speeds of 110 mph and gusts to 133 mph.
 - SW modules are manufactured to comply with U.S. and international standards, and are UL Listed, FM approved and ISPR certified.
 - All SunWize modules carry a 20-year, 80% power output warranty.



SW100, SW115 and SW120

Model	Rated Power (Watts)	Rated Voltage (Vmp)	Rated Current (Imp)	Open Circuit Voltage (Voc)	Short Circuit Current (Isc)	Dimensions (inches)	Unit Weight (lbs)
SW85	85	17.4	4.88	21.4	5.7	56.93 x 22.80	23
SW90	90	17.4	5.17	21.4	5.9	56.93 x 22.80	23
SW100	100	16.7	6.00	21.0	6.7	56.93 x 25.43	26
SW115	115	16.7	6.89	21.0	7.7	56.93 x 25.43	26
SW120	120	16.7	7.18	21.0	8.0	56.93 x 25.43	26

Vmp - maximum power voltage (volts)
 Imp - maximum power current (amps)
 Voc - open circuit voltage (volts)
 Isc - short circuit current (amps)

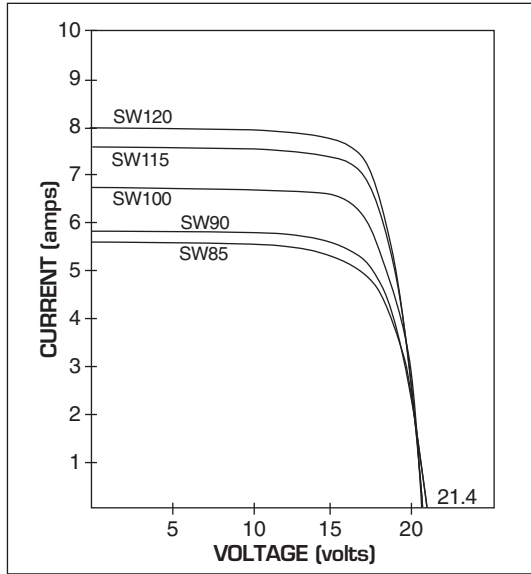
CORPORATE HEADQUARTERS

1155 Flatbush Road, Kingston, NY 12401 • Tel: 845.336.0146 • Fax: 845.336.0457
 email: sunwize@besicorp.com • www.sunwize.com

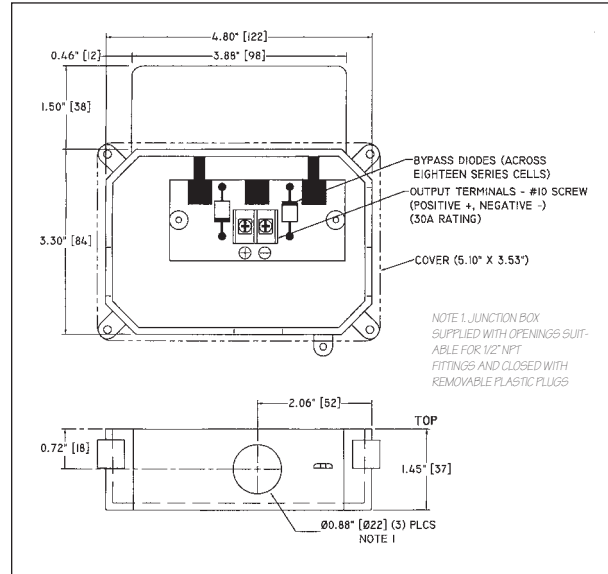
SunWize®
 TECHNOLOGIES

Electrical Characteristics

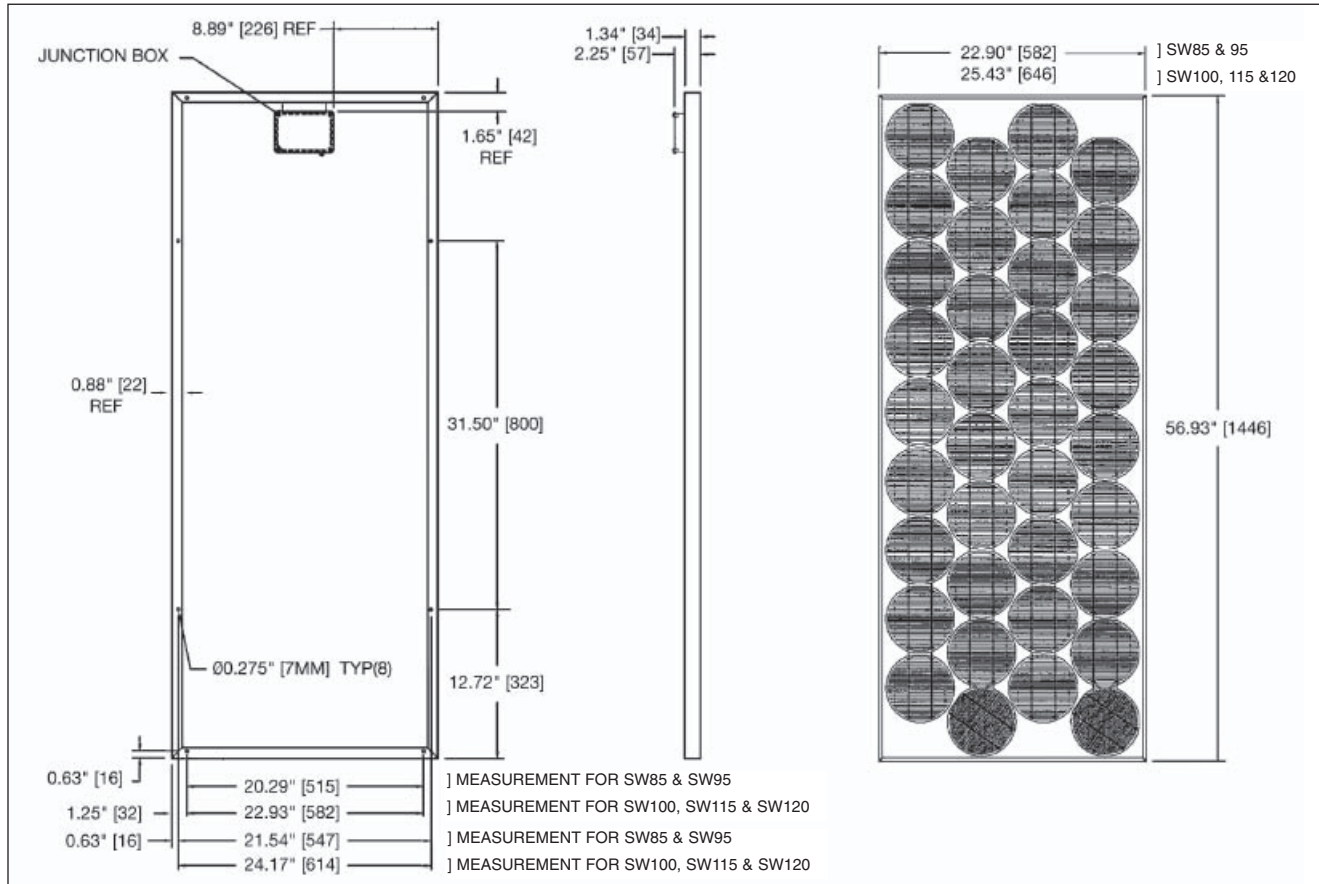
IV Curves



Junction Box details



Mechanical Specifications



CORPORATE HEADQUARTERS

1155 Flatbush Road, Kingston, NY 12401 • Tel: 845.336.0146 * Fax: 845.336.0457
email: sunwize@besicorp.com • www.sunwize.com